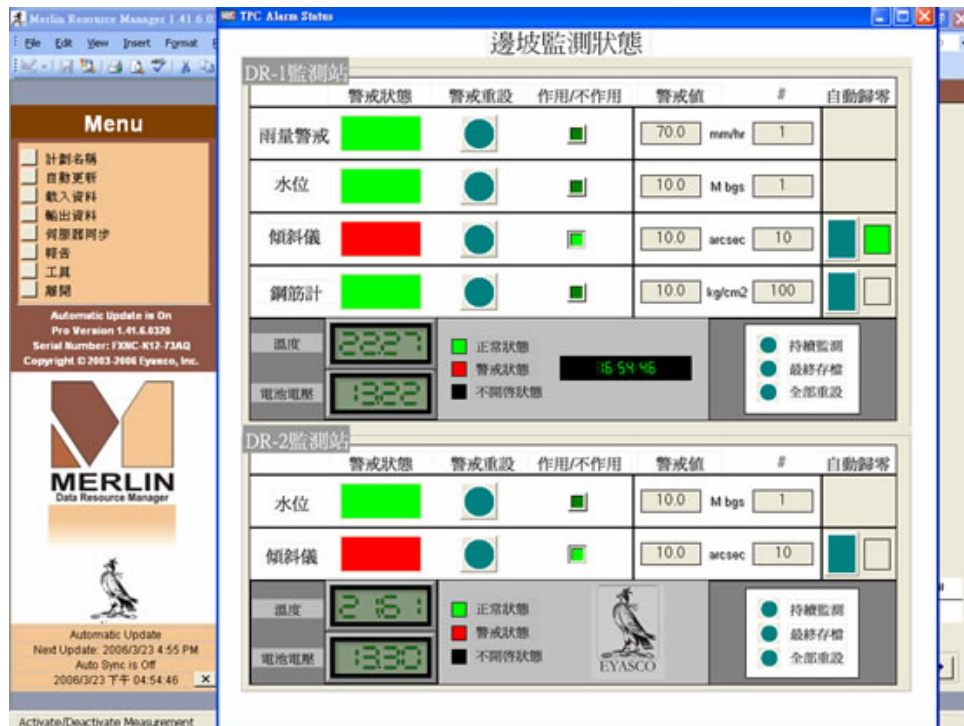




## SLOPE MONITORING TAIWAN POWER COMPANY (FEBRUARY 2006 – APRIL 2006)

Eyasco developed and installed an automated slope monitoring system for use at a critical electrical generating facility in Taiwan. Eyasco teamed with Condor Earth Technologies for this project. They supplied the GPS monitoring stations, 3-D Trakker™ software and expertise with GPS monitoring. Eyasco designed and programmed the data acquisition system and real-time interface for rain gages, piezometers (to measure ground water level), in-place inclinometers and strain gages for monitoring a steep slope above a power house. The data collected from all the monitoring devices was tied into the power house control and alarm system to provide early warning in the event of a slope failure.



REAL TIME MONITORING AND ALARM SCREEN DEVELOPED FOR TAIWAN POWER COMPANY