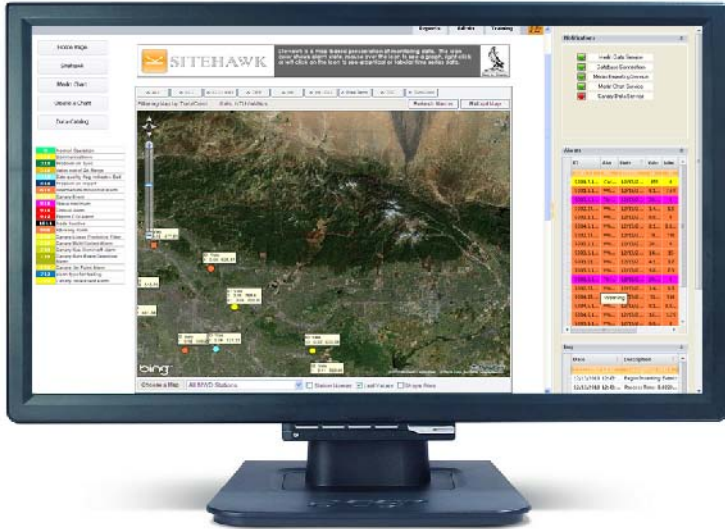


# The Most Complete Data Management Tool For Distributed Monitoring Systems



## Designed for Industry, Public Health and Water Quality

Businesses that monitor industrial controls, and agencies that protect resources for public health, such as water districts that manage water quality and supply, can upgrade and improve their monitoring services using Merlin's flexible database and SCADA integration, comprehensive data analysis, powerful reporting and extensive charting capabilities.

While many data management systems leave you guessing and trying to make sense of your numbers, Merlin's disciplined approach eliminates that extra work, so you can focus on better resource management.

## Merlin Redefines Data Management and Event Detection

Merlin integrates data collection, event detection and presentation for distributed monitoring systems in a unique seamless package. Merlin can collect data from any monitoring source, validate your data quality in real-time, then trigger alarms for remediation of critical managed resources.

Merlin's powerful charting and GIS tools help you make better decisions quicker. Apply real-time statistical analyses on data from any enterprise database, then employ mapping, shapefile overlays and Merlin's fast charting capabilities to make more informed decisions about events within your monitoring system.

*"Adding Merlin has been a huge cost savings for us. Adding sensors is amazingly easy - we just add it to the monitoring system and everything propagates to the database and graphical display. It's all pretty much automatic."*

-J Cuetara, Solano County Water Agency



## Accurate Data Analysis and Event Detection Reduces Risk

Merlin is perfect for organizations that demand a more informed understanding of data from distributed monitoring systems. Merlin easily handles an unlimited amount of data, and still delivers the most accurate results working either off-line on historical

data or in real-time, where event detection and immediate remediation from adverse risk or impact is essential.

### MERLIN ENTERPRISE INCLUDES

- Interactive GIS Mapping and Charting (SiteHawk)
- Automated Data Processing
- Scaled and Raw Data Display
- QA/QC Data Validation
- Real Time Alarm Enunciation
- Real Time Charting
- Transaction Logging
- Automatic Status Reports
- Client Synchronization
- Oracle & SQL Server Integration
- Modal Merlin Charting
- Instrument Inventory with Metadata
- Import and Export Data
- Export Chart Images
- Integrated Web Interface
- Web Based Credential Manager

### EXTENSION MODULES

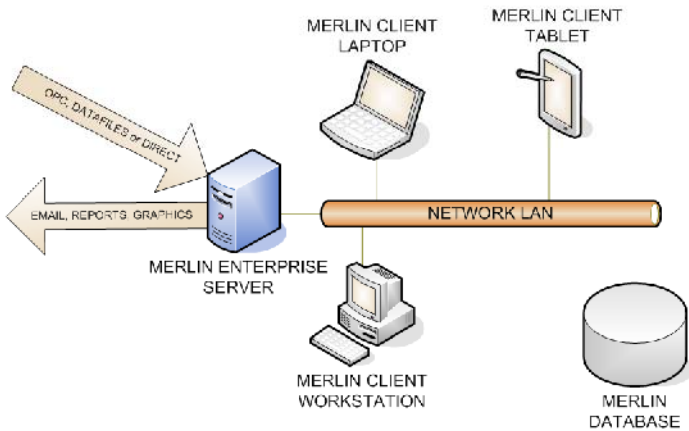
- OPC Compliant Interface
- Real-Time Statistical Analysis (Canary)
- Data Catalog Time Series with QA/QC
- Create-a-Chart Time Series
- Customizable Reports

### Greater Accessibility Improves Data Management

Merlin automatically imports and consolidates all monitoring data into one location, where projects can be viewed, analyzed and where reporting is generated. Optional real-time statistical modeling, such as that provided by CANARY, can easily be added. Monitoring status, all measurement readings and events can be seen at a glance, and is synchronized for an unlimited number of clients. All user access and rights to data are managed through a web based credential manager.



### Merlin Enterprise Collects and Reports to Any Device



### Integration with Oracle, SQL, and SCADA Systems

Merlin integrates with enterprise databases, such as Oracle and SQL, and utilizes an OPC compliant interface that works with any SCADA system.

### Flexible Data Management Optimizes Productivity

Resource managers value Merlin's high data throughput with flexible data access to deliver the results they need, whether real-time data analysis is required or for evaluation offline. Scaling factors can be applied to all measurements over any date range, with data exported into CSV or pdf format. Time stamped backups and data archiving is easily configured.

### Strict QA/QC Standards Improve Reliability and Results

Merlin applies QA/QC alarm validation against thresholds set by the user. Monitoring data is QC'd in real-time before posting which improves reliability and limits false positives from triggering erroneous events, however your original raw data is always preserved and available for review or threshold revisions.

### Automatic Status Reports Keep All Clients Notified

Merlin automatically delivers status reports via email so everyone is notified on server status, records processed, the number of errors and more. Merlin logs all transactions that occur, and coupled with time-stamped backup and data archiving, the risk of losing important data is eliminated.



*Merlin combines high-level GIS maps with deep graphical analysis.*

### Powerful Charting Improves Understanding

Merlin's data presentation is best experienced through its extensive charting capabilities. Merlin's map based presentation of color-coded data, with optional shapefile overlay, instantly reveals station status and alarm events in your distributed monitoring system. When you need to know more, monitoring data can be plotted in real-time, over any selected time period, plus you can quickly identify relationships between any 2 series of measurements. Anyway you need it, Merlin accurately presents your data so you can make more informed decisions about your monitoring system.

For more information and demo visit [www.eyasco.com](http://www.eyasco.com) <http://www.eyasco.com>, or contact Eyasco at [info@eyasco.com](mailto:info@eyasco.com)