

PRODUCT DATA SHEET

Merlin is a powerful database application that collects, stores, and displays all your monitoring data in one easy to use application. Merlin was designed to collect data from any data source, including dataloggers, spreadsheets and Programmable Logic Controllers (PLC) , and turn it into useful information. Its graphical interface shows instrument and monitoring status at a glance. Colored icons makes alarms and warnings easily discernable, data tables show individual readings, and a powerful graphing package visualizes data trends. Combine this with automatically generated graphic plots for internet display, and you have a powerful package for managing and sharing information from an unlimited number of data acquisition systems.

Merlin provides a "birds eye view" of any number of remote monitoring stations.

Multi-Level Project Tree

Colored Icons display status

Displays both raw and scaled values

Menu

- Projects
- Automatic Updates...
- Synchronize
- Import Data...
- Reports...
- Tools...
- Exit

Automatic Update is Off
Version 1.2.5.0112
Serial Number: G140-XSX-049Q
Copyright © 2003-2005 Eyasco, Inc.

MERLIN
Data Resource Manager

Eyasco

Projects

- Arcadia
- Arcadia Pump Test
- Arrowhead
 - Spring Site 1
 - Spring Site 10
 - Spring Site 2
 - Spring Site 3
 - Tank Site
 - New Spring 7
 - Spring Site 7
 - Load Station 1
 - Load Station 2
 - 15
 - 16
 - 99
 - Voltage 99
 - Temperature 99
 - RWHS Weather
- Bergman
- IRWM
- Lukens
- McCloud
- NewCabazon
- North Neighbor
- Old Cabazon
- PMGS

Type ID: 50.82.99.99.1 Active:

Name: Voltage 99

Units: VDC Sensor Measurement Index: 1

Sync Date: 3/7/2005

Event Date	Raw Value	Calc Value
3/7/2005 1:00:00 AM	13.276	13.276
3/7/2005 2:00:00 AM	13.275	13.275
3/7/2005 3:00:00 AM	13.282	13.282
3/7/2005 4:00:00 AM	13.282	13.282
3/7/2005 5:00:00 AM	13.275	13.275
3/7/2005 6:00:00 AM	13.256	13.256
3/7/2005 7:00:00 AM	13.222	13.222
3/7/2005 8:00:00 AM	13.155	13.155
3/7/2005 9:00:00 AM	13.123	13.123
3/7/2005 10:00:00 AM	13.11	13.11
3/7/2005 11:00:00 AM	9.5516	9.5516
3/7/2005 12:00:00 PM	12.984	12.984
3/7/2005 1:00:00 PM	12.959	12.959
3/7/2005 2:00:00 PM	12.923	12.923
3/7/2005 3:00:00 PM	12.878	12.878
3/7/2005 4:00:00 PM	12.852	12.852
3/7/2005 5:00:00 PM	12.86	12.86
3/7/2005 6:00:00 PM	12.885	12.885
3/7/2005 7:00:00 PM	12.972	12.972
3/7/2005 8:00:00 PM	13.056	13.056
3/7/2005 9:00:00 PM	13.104	13.104
3/7/2005 10:00:00 PM	13.15	13.15

Record: 4830 of 4841

No Alarm
 Critical Alarm
 Threshold Min
 Import Error
 Sync Error
 NA
 Com Error
 Warning
 Threshold Max
 Inactive
 Information

Address: Arrowhead\Load Station 2199\Voltage 99

Expand All

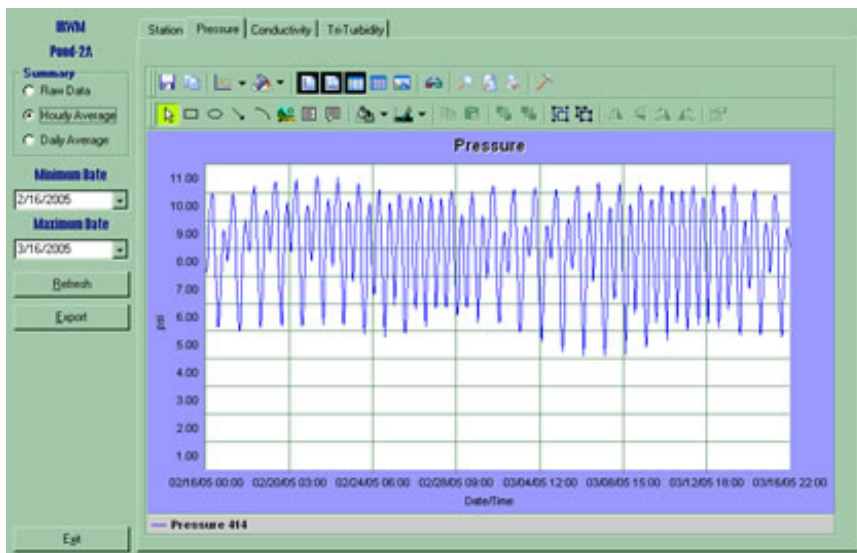
Chart Alarms! Thresholds

Chart, display alarms or set thresholds

Comparison of Merlin Versions

Feature	Basic	Pro	Enterprise
Manual Data Importing	X	X	X
Scheduled Data Importing	X	X	X
Time-Stamped Backups	X	X	X
Scale Factors over Multiple Date Ranges	X	X	X
Alarm Thresholds	X	X	X
QA/QC Data Validation	X	X	X
Graphing Package	X	X	X
Transaction Logging	X	X	X
Data Export	X	X	X
Data Archiving	X	X	X
Automatic Status Reports		X	X
E-mailed Alarm Reports with pdf		X	X
Automatic .jpg and .csv		X	X
Internet Data Synchronization		X	X
SQL Server Backend			X

- Creates backup copies of raw data
 - Groups data by Project, Station and Sensor
 - Works with popular backend databases like MS Access, MySQL, and SQL Server
 - Applies scale factors over specific date ranges
- Alarms any data stream with min and max thresholds
 - Creates and exports jpg graphics and 'csv' files for distribution and analysis
 - Synchronizes multiple databases over the Internet
 - Logs all transactions



Merlin comes bundled with “Eyasco Chart”—a powerful charting program for fast and efficient display of time-series graphs. “Chart” features include data range selection, raw, hourly and daily averages, export to csv, zoom, annotate, display data grid, and save as bitmap or Windows metafile.